

MAXIM

Design: Pio e Tito Toso



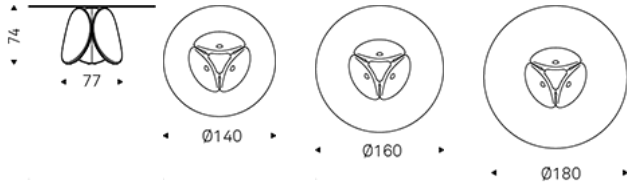
Product description

Table with base in cement clay-spatulated in colours Havana (AR04), Cairo (AR05) or Oslo (AR09). Top with plates in 15mm clear glass or extraclear glass with bevelled edges.

MAXIM

Design: Pio e Tito Toso

Dimension

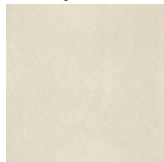


MAXIM

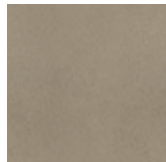
Design: Pio e Tito Toso

Finishes: base

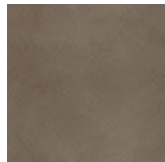
Clay



AR09 Oslo



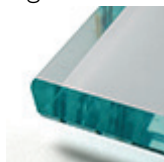
AR05 Cairo



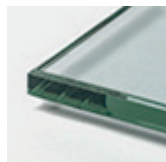
AR04 Havana

Finishes: top

glass



bevelled extra
clear



clear