

ARCADIA

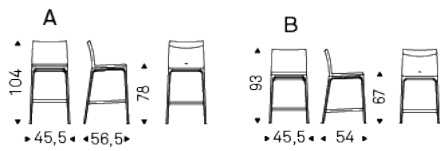


Product description

Stool with frame in natural beech (F1), Canaletto walnut (FNC), wenghè (FW) or black (OP17) stained beech. Cover in fabric, micro nubuck, soft leather or synthetic leather as per sample card. The cover is not removable.

ARCADIA

Dimension



ARCADIA

Finishes: base

wood



F1 natural
stained beech



FNC walnut
canaletto stained
beech



FW dark wenghè
stained beech



OP17 matt black

Finishes: seat

soft leather



fabric





B405

B422

B712

synthetic leather



ECP01 BIANCO

ECP72 CANOVA

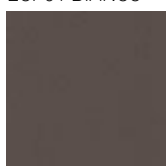
ECP47 OYSTER

ECP48 LINO

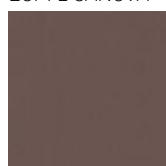
ECP25 CANAPA

ECP05 TORTORA

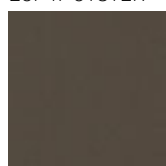
ECP26 FANGO



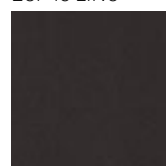
ECP83 ARGILLA



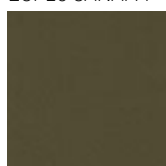
ECP07
MARRONE



ECP27 FOSSIL



ECP08 MOKA



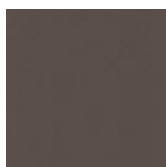
ECP28
KALAMATA



ECP36 CEMENTO



ECP23 LONDON



ECP37 ARDESIA



ECP24 NERO



ECP22 NAVY



ECP14
BORDEAUX



ECP13 ROSSO
CORSA

micro nubuck



MN103 WHITE

MN100 BEIGE

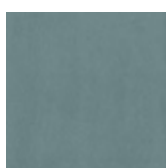
MN806 SAND

MN604 SHADOW

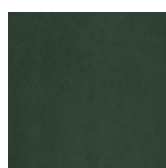
MN006 DUSTY
ROSE

MN413 ALMOND

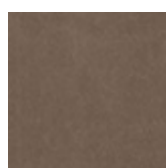
MN048
SUNSTONE



MN709 MINT



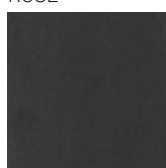
MN801 MUSK



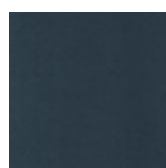
MN603 COGNAC



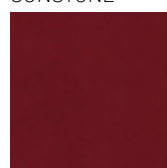
MN609 MARRON



MN618 LEAD

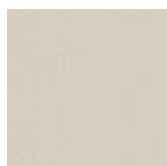


MN626
CHARCOAL

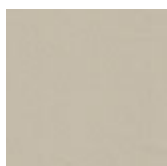


MN320
CARDINAL

glove soft leather



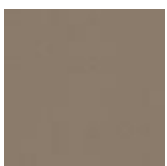
GLV02 DOVER



GLV03 ECRÙ



GLV05 CORDA



GLV07 ARGO



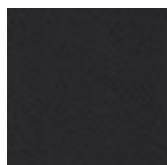
GLV11 TAUPE



GLV14 PLATOON



GLV15 CARBON



GLV17 HORNET



GLV12 OLIVA



GLV18 BARRIQUE